



shaw contract[®]
commercial flooring





Front cover shows
ROAM TILE 5T228
in stonegate 26760,
shadow 26557
and grey mist 26481

With Rapid Select, from Shaw Contract, you have a choice of specially edited, influential styles and colours that meet the demand of modern, functional, commercial interiors.

The ideal flooring choice for quick turnaround projects without compromising on quality, performance or design.

Rapid Select, de Shaw Contract, propose un choix de styles et couleurs tendances spécialement développés pour satisfaire les demandes d'intérieurs modernes, fonctionnels et professionnels.

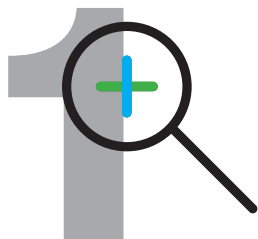
C'est le choix de revêtement de sol idéal, pour réaliser des projets rapidement, sans faire aucune concession sur la qualité, la performance ou le design.

Rapid Select, de Shaw Contract, propone una elección de estilos y colores de tendencia especialmente desarrollados para satisfacer la demanda de interiores modernos, funcionales y comerciales

Es la elección de revestimiento ideal para realizar proyectos rápidamente, sin hacer ninguna concesión sobre la calidad, el funcionamiento o el diseño

GRAPH TILE 5T227
in grey mist 26481
and regent blue 26485

With Rapid Select you can complete your project in 3 easy steps.



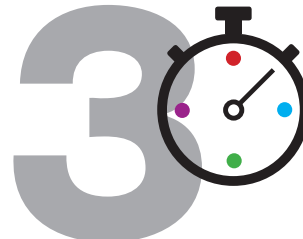
Choose the look

Create the look you want to achieve with 2 carpet tile shapes and 3 styles.



Select your colour

A solution to complement a whole range of commercial interior schemes with 8 colour choices.



Quick-service option

A special service delivery option – 24 hour dispatch* on receipt of order acknowledgement.

Choisissez votre design

Créez le design que vous souhaitez grâce à ses 2 formats de dalles de moquette et ses 3 styles.

Sélectionnez vos coloris

Une solution qui, grâce à ses 8 coloris, vient compléter une large gamme de produits destinés à l'agencement des bureaux.

Option « Quick service »

Un service de livraison spécial est disponible en option – Expédition en 24 heures* à réception de la commande.

Eligir diseño

Crear el diseño deseado con 2 formatos de moqueta y 3 estilos.

Seleccionar su color

Una solución que completa una grande oferta de productos destinados a los diseños interiores para las oficinas, con 8 colores.

Opción « Quick service »

Un servicio de entrega opcional – Envío en 24 horas* una vez recibido el pedido.



Made in the UK

Carpet tiles manufactured in the UK using Shaw Contract performance engineered fibre **eco*solution Q®** nylon and **taskworX** backing.



Fit for purpose

Meets the needs of building owners and occupiers for occupant and acoustic comfort.



Added value

Competitively-priced with no compromise on quality – so you can add value for your client.

Fabriqués au Royaume-Uni

Les dalles de moquette sont fabriquées au Royaume-Uni utilisant la fibre de haute performance, confectionnée par Shaw Contract Nylon **eco*solution Q®** et sous-couches **taskworX**.

Adaptés aux besoins

Répond au confort d'utilisation et au confort acoustique, recherchés par les propriétaires et occupants d'immeubles de bureau.

Le PLUS produit

Des prix compétitifs sans faire aucune concession sur la qualité - un avantage pour votre client.

Hechos en le Reino Unido

Losetas y planks fabricadas en el Reino Unido con fibra de Shaw Contract de alto rendimiento Poliamida **eco*solution Q®** con soporte **taskworX**.

Adaptados a las necesidades

Responde al confort de uso y al confort acústica, buscados por los propietarios y ocupantes de edificios de oficinas.

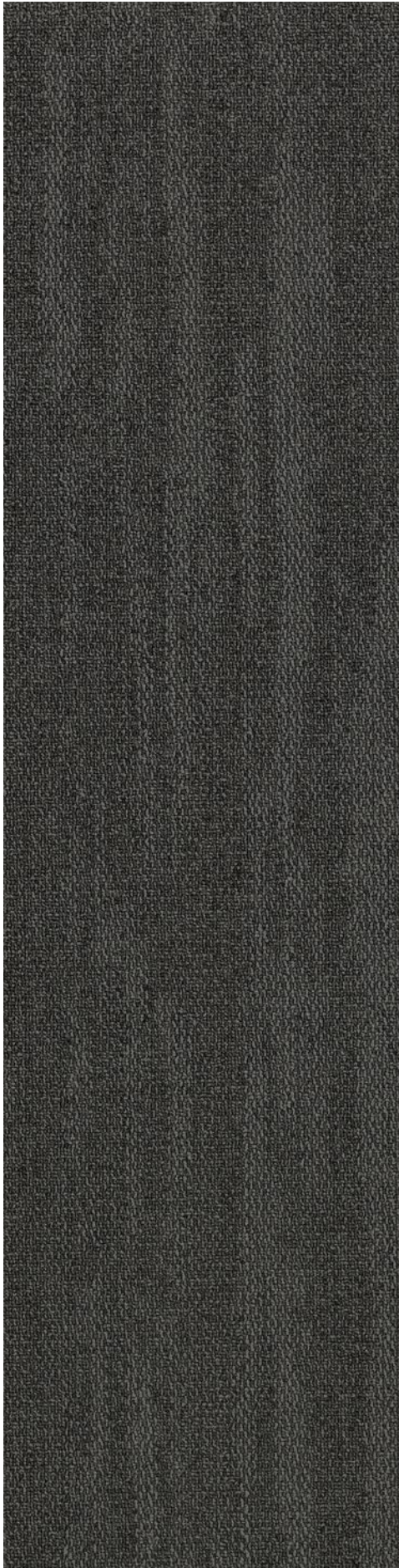
Beneficio

Precios competitivos sin ninguna concesión sobre la calidad - una ventaja para el cliente.

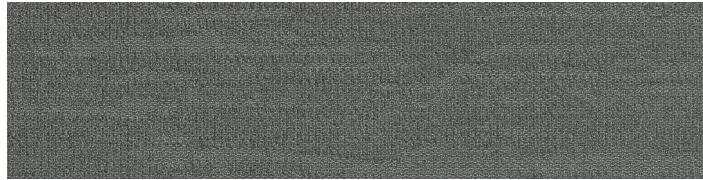
Modalités d'expédition des commandes en 24 heures. *Rapid Select est disponible pour expédition en 24 heures, si les conditions suivantes sont respectées : - Option réservée uniquement aux clients Shaw Contract. - Expédition réalisée dans la limite des stocks disponibles - Shaw Contract doit avoir reçu une commande complète et détaillée pour valider l'expédition - Les 24 heures ne prennent pas en compte les weekends et jours fériés. - concernent les commandes de maximum 500 m²

Los terminos y condiciones por el envío de los pedidos en 24 horas. *Rapid Select está disponible para envío en 24 horas si las condiciones siguientes son respectadas : - Opción reservada unicamente a los clientes de Shaw Contract. - Envío realizada hasta fin de existencias. - Shaw Contract tiene que haber recibo el pedido completo y detallado para validar el envío. - Los 24 horas no tienen en cuenta los fines de semana y días feriados. - se refieren a los pedidos de máximo 500 m²





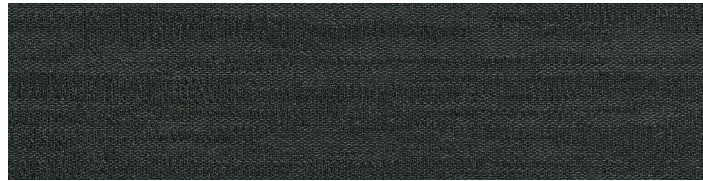
stonegate 26760



grey mist 26481



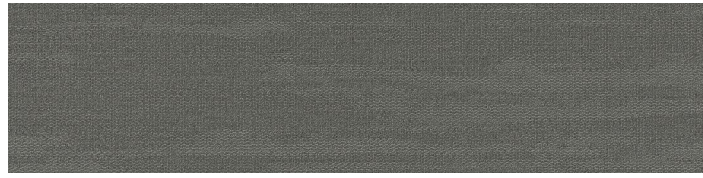
flint 26505



shadow 26557



sussex grey 26535



cobblestone 26515

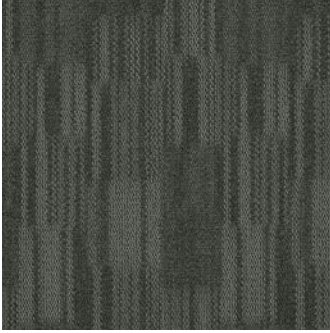
Roam offers soft organic movement that mimics a natural texture often found in nature. The elongated plank tile format allows designers the flexibility to create unique floor layouts.

Roam présente un léger mouvement organique imitant une texture souvent retrouvée en pleine nature. Le format allongé des dalles plank offre aux designers une grande flexibilité pour créer des agencements de sols uniques

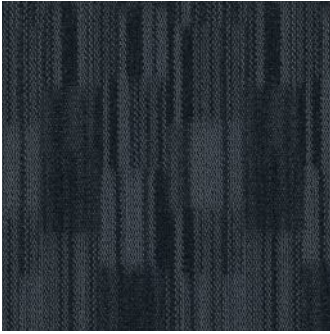
Roam presenta un movimiento suave orgánico que imita una textura natural encontrada a menudo, en la naturaleza. El formato alargado de los plank permite a los diseñadores la flexibilidad para crear diseños de suelos únicos



NOOK TILE 5T229



grey mist 26481



regent blue 26485



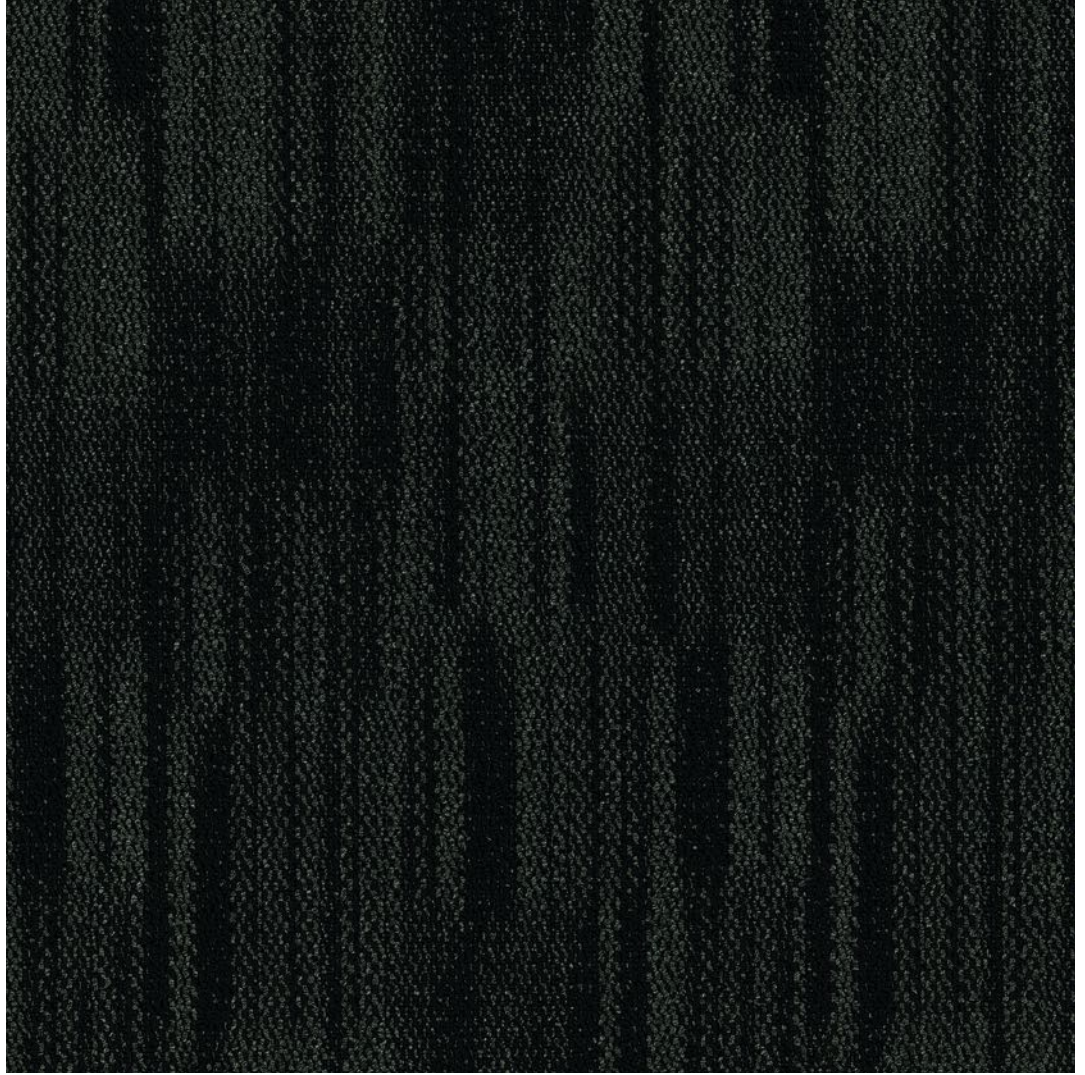
cobblestone 26515



stonegate 26760



looking glass 26530



flint 26505



sussex grey 26535



shadow 26557

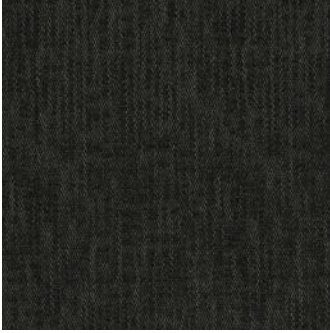
Nook is an eye-catching off-set square design, with high and low textured pattern effects. Providing designers with an option to create both interest and a flooring feature.

Nook attire tous les regards par ses motifs géométriques carrés, décalés et ses effets texturés. Elle fournit aux designers la possibilité, à la fois, de proposer un revêtement de sol à part entière et de créer l'enthousiasme autour d'elle.

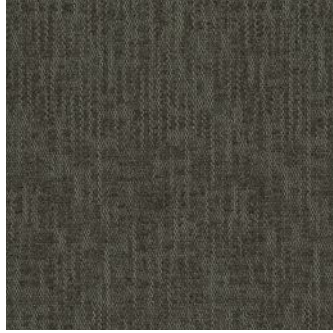
Nook llama la atención por sus diseños geométricos cuadrados y desplazados con efectos de textura. Nook ofrece a los diseñadores la oportunidad de proponer un revestimiento único y además, de crear entusiasmo



GRAPH TILE 5T227



shadow 26557



stonegate 26760



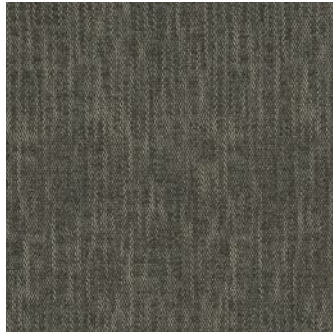
cobblestone 26515



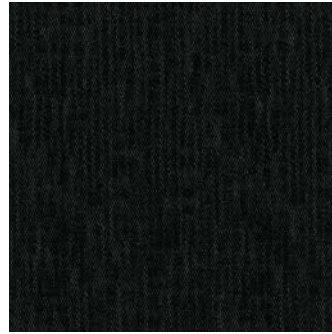
sussex grey 26535



regent blue 26485



looking glass 26530

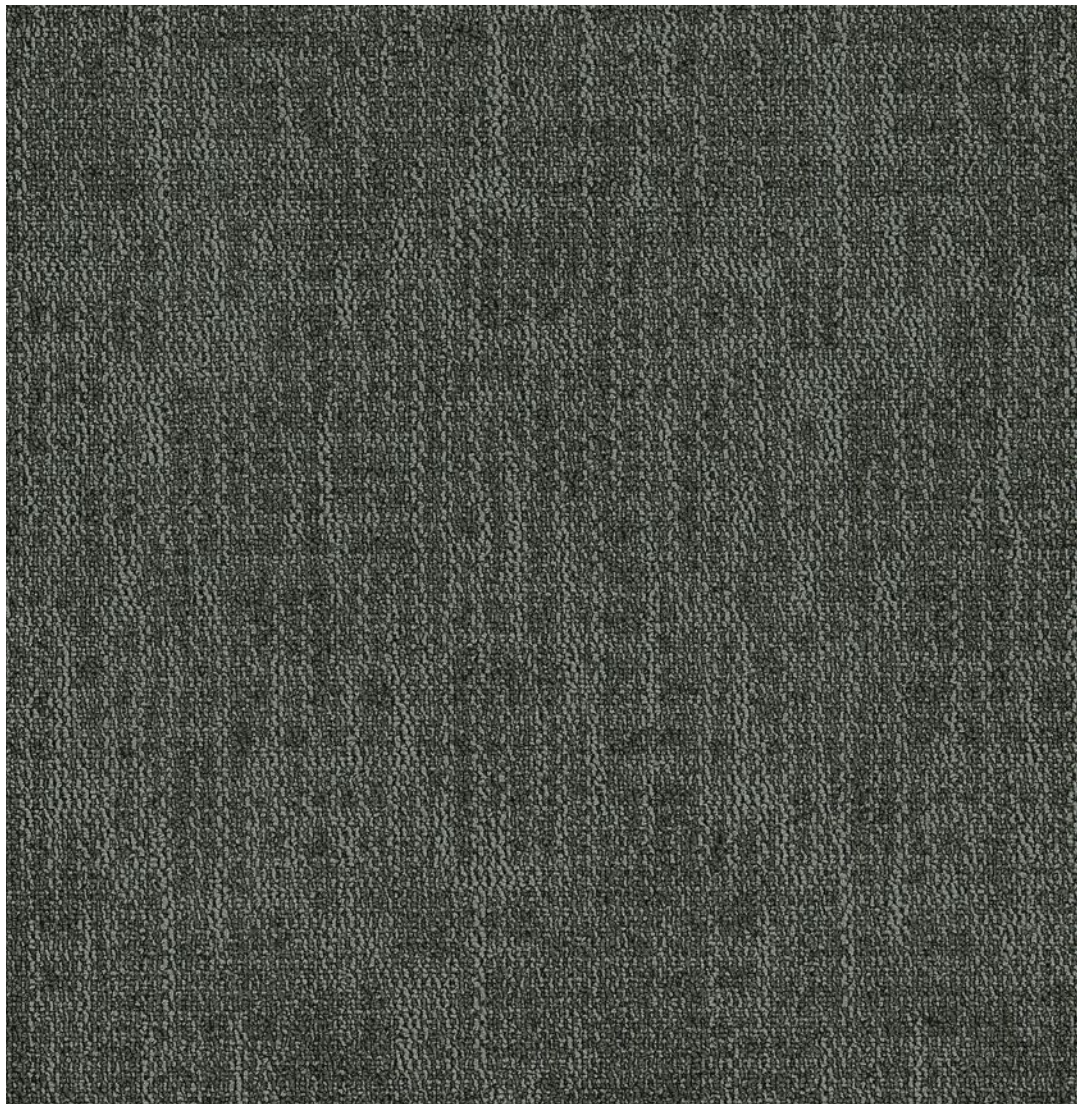


flint 26505

Graph features a network of lines that overall create a small scale pattern, and takes its inspiration from the linear patterning of graph paper.

Graph représente un enchevêtrement de lignes qui crée un motif rappelant de petites échelles. Elle prend son inspiration dans la structure linéaire du papier millimétré.

Graph representa una maraña de líneas. Esto crea un modelo que recuerda pequeñas escalas, y que se inspira en la estructura lineal del papel de gráfico.



grey mist 26481

roam tile

style number:	5T228
collection:	rapid select
product type:	carpet tile

construction	standard	data + performance
type of manufacture:	ISO 2424	tufted 1/12" 47.24 per 10 cm
aspect:	ISO 2424	multi-level pattern loop
dye method:		100% solution dyed
dimensions:	EN 994	25 x 100 cm 20 tiles (5 m ²) per box
primary backing:	ISO 2424	PET non-woven
secondary backing:	ISO 2424	taskworx® polymer modified bitumen
pile fibre composition:	ISO 2424	eco solution Q® polyamide 6
total thickness:	ISO 1765	6.0 mm
effective pile thickness:	ISO 1766	2.2 mm
total mass:	ISO 8543	4,131 g/m ²
nominal total pile mass:	ISO 2424	616 g/m ²
effective pile mass:	ISO 8543	261 g/m ²
pile density:	ISO 8543	0.108 g/cm ³

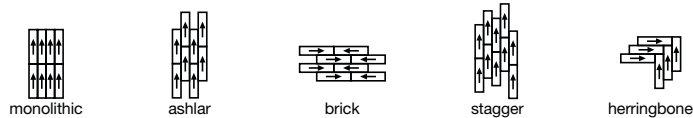
performance

number of tufts:	ISO 1763	229,000/m ² 45.9 per 10cm
electrostatic propensity:	ISO 6356	≤ 2.0 kv (stroll test)
use classification:	EN 1307	33 commercial heavy
luxury class:	EN 1307	LC 1
dimensional stability:	EN 986	≤ 0.2 %
impact sound insulation:	ISO 10140	25 dB
sound absorption classification:	ISO 354/11654	0.15aw Class E
thermal resistance m ² K/W:	ISO 8302	0.065 m ² K/W TOG 0.65
dry slip resistance:	ISO 13893	pass
colour fastness to light:	ISO 105-B02	> 6
flammability:	EN 13501-1	Bfl - S1
castor chair:	EN 948	≥ 2.4 continuous use



10 year commercial limited warranty subject to installation in full accordance with manufacturer's instructions and a regular effective cleaning and maintenance programme.

recommended installation methods



coordinating products

carpet tile: **nook tile, graph tile**



25 db 0.15 aw

attributes + certifications

environmental product declaration (EPD):

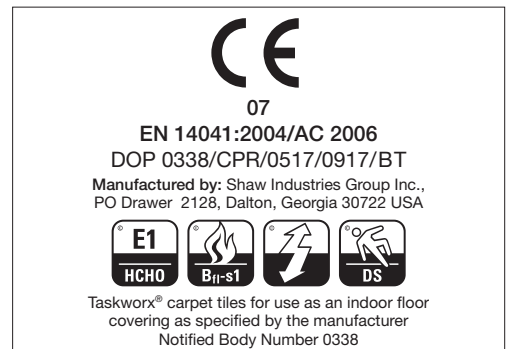
take back policy:*
product packaging:
country of origin:**

3rd party certified in accordance with ISO 14044, ISO 14025, EN 15804
shaw contract offers a take back policy for all taskworx products
100% recyclable
United Kingdom

additional information

*For more information about the take back policy, visit www.shawcontract.com/takebackpolicy.

**Meets or exceeds all local and national regulations in country of manufacture. (Manufactured in an ISO 90001 & ISO 14001 certified facility or equivalent)



Specifications are subject to nominal manufacturing variances. Material supply and/or manufacturing processes may necessitate specification changes without notice. This carpet is an exclusive design and may not be duplicated in any manner. Use of this design in the creation of another carpet design is also strictly prohibited. Visit shawcontract.com/testing for more information.

nook tile

style number:	5T229
collection:	rapid select
product type:	carpet tile

construction	standard	data + performance
type of manufacture:	ISO 2424	tufted 1/12" 47.24 per 10 cm
aspect:	ISO 2424	multi-level pattern loop
dye method:		100% solution dyed
dimensions:	EN 994	50 x 50 cm 20 tiles (5 m ²) per box
primary backing:	ISO 2424	PET non-woven
secondary backing:	ISO 2424	taskworx® polymer modified bitumen
pile fibre composition:	ISO 2424	eco solution Q® polyamide 6
total thickness:	ISO 1765	6.2 mm
effective pile thickness:	ISO 1766	2.4 mm
total mass:	ISO 8543	4,121 g/m ²
nominal total pile mass:	ISO 2424	616 g/m ²
effective pile mass:	ISO 8543	264 g/m ²
pile density:	ISO 8543	0.084 g/cm ³

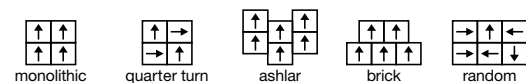
performance

number of tufts:	ISO 1763	212,000/m ² 45.9 per 10cm
electrostatic propensity:	ISO 6356	≤ 2.0 kv (stroll test)
use classification:	EN 1307	33 commercial heavy
luxury class:	EN 1307	LC 1
dimensional stability:	EN 986	≤ 0.2 %
impact sound insulation:	ISO 10140	25 dB
sound absorption classification:	ISO 354/11654	0.15aw Class E
thermal resistance m ² K/W:	ISO 8302	0.075 m ² K/W TOG 0.75
dry slip resistance:	ISO 13893	pass
colour fastness to light:	ISO 105-B02	> 6
flammability:	EN 13501-1	Bfl - S1
castor chair:	EN 948	≥ 2.4 continuous use



10 year commercial limited warranty subject to installation in full accordance with manufacturer's instructions and a regular effective cleaning and maintenance programme.

recommended installation methods



coordinating products

carpet tile: **graph tile, roam tile**



attributes + certifications

environmental product declaration (EPD):

- take back policy:*
- product packaging:
- country of origin:**

3rd party certified in accordance with ISO 14044, ISO 14025, EN 15804
shaw contract offers a take back policy for all taskworx products
100% recyclable
United Kingdom

additional information

*For more information about the take back policy, visit www.shawcontract.com/takebackpolicy.

**Meets or exceeds all local and national regulations in country of manufacture. (Manufactured in an ISO 90001 & ISO 14001 certified facility or equivalent)



Specifications are subject to nominal manufacturing variances. Material supply and/or manufacturing processes may necessitate specification changes without notice. This carpet is an exclusive design and may not be duplicated in any manner. Use of this design in the creation of another carpet design is also strictly prohibited. Visit shawcontract.com/testing for more information.

graph tile

style number: **5T227**
 collection: **rapid select**
 product type: **carpet tile**

construction	standard	data + performance
type of manufacture:	ISO 2424	tufted 1/12" 47.24 per 10 cm
aspect:	ISO 2424	multi-level pattern loop
dye method:		100% solution dyed
dimensions:	EN 994	50 x 50 cm 20 tiles (5 m ²) per box
primary backing:	ISO 2424	PET non-woven
secondary backing:	ISO 2424	taskworx® polymer modified bitumen
pile fibre composition:	ISO 2424	eco solution Q® polyamide 6
total thickness:	ISO 1765	5.9 mm
effective pile thickness:	ISO 1766	2.3 mm
total mass:	ISO 8543	4,188 g/m ²
nominal total pile mass:	ISO 2424	616 g/m ²
effective pile mass:	ISO 8543	275 g/m ²
pile density:	ISO 8543	0.099 g/cm ³

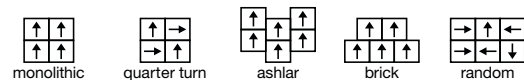
performance

number of tufts:	ISO 1763	219,000/m ² 44.6 per 10cm
electrostatic propensity:	ISO 6356	≤ 2.0 kv (stroll test)
use classification:	EN 1307	33 commercial heavy
luxury class:	EN 1307	LC 1
dimensional stability:	EN 986	≤ 0.2 %
impact sound insulation:	ISO 10140	25 dB
sound absorption classification:	ISO 354/11654	0.15aw Class E
thermal resistance m ² K/W:	ISO 8302	0.065 m ² K/W TOG 0.65
dry slip resistance:	ISO 13893	pass
colour fastness to light:	ISO 105-B02	> 6
flammability:	EN 13501-1	Bfl - S1
castor chair:	EN 948	≥ 2.4 continuous use



10 year commercial limited warranty subject to installation in full accordance with manufacturer's instructions and a regular effective cleaning and maintenance programme.


recommended installation methods



coordinating products

carpet tile: **nook tile, roam tile**





07

EN 14041:2004/AC 2006
 DOP 0338/CPR/0517/0917/BT

Manufactured by: Shaw Industries Group Inc.,
 PO Drawer 2128, Dalton, Georgia 30722 USA

E1
HCHO

Bfl-s1

DS

Taskworx® carpet tiles for use as an indoor floor covering as specified by the manufacturer
 Notified Body Number 0338

attributes + certifications

environmental product declaration (EPD):

take back policy:*
 product packaging:
 country of origin:**

3rd party certified in accordance with ISO 14044, ISO 14025, EN 15804
shaw contract offers a take back policy for all taskworx products
100% recyclable
United Kingdom

additional information

*For more information about the take back policy, visit www.shawcontract.com/takebackpolicy.

**Meets or exceeds all local and national regulations in country of manufacture. (Manufactured in an ISO 90001 & ISO 14001 certified facility or equivalent)



Specifications are subject to nominal manufacturing variances. Material supply and/or manufacturing processes may necessitate specification changes without notice. This carpet is an exclusive design and may not be duplicated in any manner. Use of this design in the creation of another carpet design is also strictly prohibited. Visit shawcontract.com/testing for more information.

LRV: Light Reflectance Values

	Style Number	Colour Name	Colour Number	LRV
roam tile	5T228	grey mist	26481	11.2
	5T228	flint	26505	3.1
	5T228	cobblestone	26515	15.3
	5T228	sussex grey	26535	10.4
	5T228	shadow	26557	6.0
	5T228	stonegate	26760	11.0
nook tile	5T229	grey mist	26481	11.4
	5T229	regent blue	26485	7.2
	5T229	flint	26505	3.2
	5T229	cobblestone	26515	15.9
	5T229	looking glass	26530	15.7
	5T229	sussex grey	26535	11.5
	5T229	shadow	26557	6.0
	5T229	stonegate	26760	10.4
graph tile	5T227	grey mist	26481	11.4
	5T227	regent blue	26485	7.3
	5T227	flint	26505	2.9
	5T227	cobblestone	26515	15.8
	5T227	looking glass	26530	13.6
	5T227	sussex grey	26535	11.0
	5T227	shadow	26557	5.9
	5T227	stonegate	26760	10.6



UK: infouk@shawcontract.com

FRANCE: infofr@shawcontract.com

MIDDLE EAST: infomea@shawcontract.com

or

shawcontract.com/rapidselect

Made in the UK

shaw contract[®]
commercial flooring

London +44 (0) 20 7961 4120 | Paris +33 1 55 27 39 07 | Dubai +971 4 313 2496

Corporate Headquarters +1 800 257 7429 | +1 706 532 7984 | Atlanta +1 404 853 7429 | Bangalore +080 6773 0202 | Beijing +86 10 6568 5881
Chicago +1 312 467 1331 | Dubai +971 4 313 2496 | Hong Kong +852 2623 0371 | Latin America (Miami) +1 305 827 5912 | London +44 207 961 4120
Los Angeles +1 800 233 1614 | Melbourne +61 3 9939 8543 | Mexico City +55 5010 7600 | Nantong +86 400 800 7429 | New York +1 212 953 7429
Paris +33 1 55 27 39 07 | San Francisco +1 415 955 1920 | Santiago +562 2431 5000 x 550 | Shanghai +86 21 3338 4000
Singapore +65 6733 1811 | Sydney +61 2 8065 1901